

CA15135 multi-targeting Biophysical Training School

Concept

The focus of this Training School will be to explore the principles underlying target identification, biochemical and cell-based assay development, small molecule screening and *in-vitro* ADME-Tox profiling as part of lead optimization to endow compounds with multi-targeting activity.

Name:

Job Title:

Company:

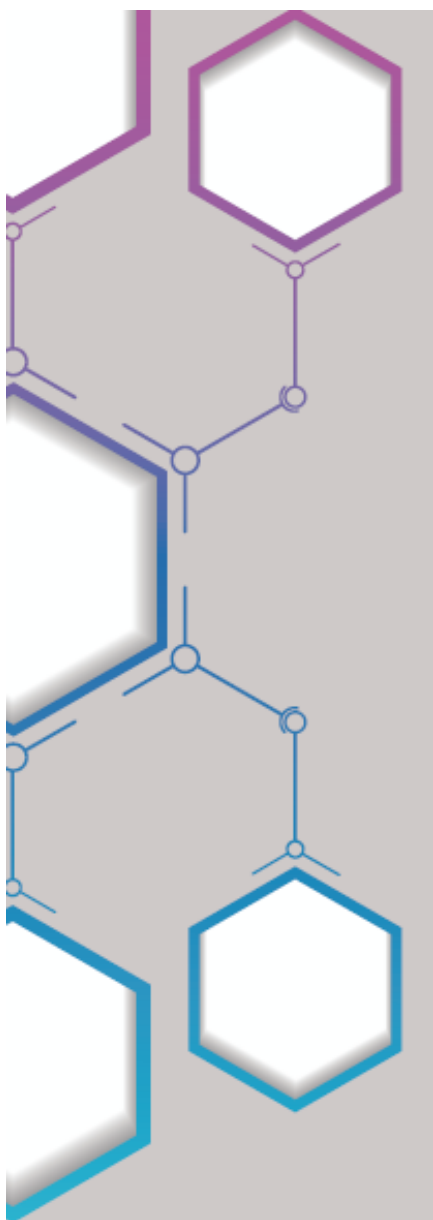
What is your level of experience with the following

- How much of your work is laboratory based: Low Medium High
- Cell-based assays: Low Medium High
- High Content Screening & Image Analysis: Low Medium High
- Screening data analysis: Low Medium High
- Automated liquid handling: Low Medium High
- The drug discovery process: Low Medium High
- Biochemical assays: Low Medium High
- High Throughput Screening: Low Medium High
- Chemical Biology: Low Medium High
- Proof-of-concept screening: Low Medium High

Please provide details of any topics you would like to cover

Please provide details of which assay formats you have used

(e.g. Absorbance, TR-FRET, etc)



cost
EUROPEAN COOPERATION
IN SCIENCE & TECHNOLOGY



Fraunhofer
IME